

FINAL
MITIGATED NEGATIVE DECLARATION
Conejo Creek Pedestrian Bridge

Project Sponsor

Conejo Open Space Conservation Agency
2100 E. Thousand Oaks Boulevard
Thousand Oaks, Ca. 91362

Public Review Period

August 6, 2010 – August 26, 2010

Prepared by

City of Thousand Oaks
Community Development Department
2100 East Thousand Oaks Boulevard
Thousand Oaks, Ca. 91362

Contact Person

Richard A. Burgess, Senior Planner
(805) 449-2326 / rburgess@toaks.org

DISCLAIMER

This environmental document has been prepared by the Community Development Department in accordance with State and City Guidelines, and is intended to be an information document fully disclosing the potential environmental effects of the proposed project. This disclaimer does not imply that other aspects of the proposed project are beneficial, detrimental, or of no significance.

TABLE OF CONTENTS

Title Page	
Disclaimer	
Final MND Initial Study Information	
Public Comments	
Staff Response to Public Comments	
Mitigated Negative Declaration	1
Use of Initial Study	2
Initial Study Determination	2
Initial Study	3
Project Description	3
Surrounding Land Uses and Setting	4
Potentially Affected Environmental Factors	4
Environmental Impact Checklist	5
Aesthetics	5
Air Quality	6
Biological Resources	7
Cultural Resources	11
Geology and Soils	12
Grading and Topographic Modification	13
Hazards and Hazardous Materials	13
Hydrology and Water Quality	15
Land Use and Planning	17
Population and Housing	18
Energy and Mineral Resources	18
Noise	19
Public Services	20
Transportation/Traffic	21
Utilities and Service Systems	22
Mandatory Finding of Significance	23
Additional Source References	24
Appendix A	Project Description, Location Map, Site Plan
Appendix B	Bridge Schematics, Photograph
Appendix C	Floristic Survey
Appendix D	Draft Mitigation Monitoring Plan

Conejo Creek Pedestrian Bridge Final MND Initial Study Information

Introduction

Based on the original Initial Study for the proposed project, it was determined that potential environmental impacts associated with this proposal could be mitigated to an acceptable level and consequently, a Mitigated Negative Declaration (MND) was prepared.

Public Comments

During the public review period for this MND, which extended from August 6, 2010 through August 26, 2010, comments were received from the California Department of Fish and Game. The text of the comments and the Staff response are contained in the Public Comment and the Staff Response to Public Comments sections which follow.

Errata

Since the preparation of the Draft MND, no new information of an environmental nature has come to light. Several minor modifications have been made in the text to provide clarification and correct information in the Draft MND. It should be noted that these changes do not introduce new significant environmental impacts not previously discussed.

Mitigation Monitoring Program

A Mitigation Monitoring Program has been prepared for the project and is included as Appendix D of the Initial Study. Public Resources Code Section 21081.6 requires that when an agency adopts a Negative Declaration containing mitigation measures, the agency must also adopt a program for monitoring measures that were made conditions of project approval. The applicant will be required to prepare a report documenting compliance with the mitigation measures subject to approval of the Community Development Department and other involved departments.

PUBLIC COMMENTS

From: Daniel Blankenship <DSBlankenship@dfg.ca.gov>
To: "Shelly Austin" <SAustin@toaks.org>
Date: 8/24/2010 5:43 PM
Subject: Re: Draft MND for Conejo Creek Pedestrian Bridge

Hi Shelly,

↑ The mitigation measures look good. How much vegetation (native trees/shrubs) will need to be removed at the proposed bridge location? The aerial shows the proposed location within the tree line. Maybe it is an old aerial but it would be great to align the bridge with one of the openings in the tree line so woody vegetation wouldn't need to be removed, since vegetation provides protection and resources to the riparian. Fish and Game jurisdiction for Streambed Alteration Agreements cover the bed, bank, and channel including riparian buffer. If vegetation needs to be removed to allow access within the riparian zone the Department will have to be notified using a streambed alteration notification form (depending on the extent of vegetation removal). I will touch base tomorrow with one of our streambed staff regarding stream crossing with equipment and having a bio monitor on site for coverage will suffice.
↓

Thanks,

Dan

>>> Daniel Blankenship <DSBlankenship@dfg.ca.gov> 8/27/2010 10:00 AM >>>

Hi Shelly,

↑ Good to hear the flexibility of placing the bridge. I was trying to avoid triggering notification to not only further minimize impacts but to reduce permitting costs. The notification fee is based on the project cost. After discussing with the Streambed staffer, we felt that due to implementation of the mitigation measures and staying out of the bed, bank, and channel with the bridge placement that a notification will not be necessary if riparian habitat is not impacted. I would like to be contacted prior to construction and have the opportunity to be on site during construction to add another layer of resource protection. I have also attached a list of BMPs that should but used (included in the MND) as needed to insure potential bio impacts are minimized during construction. This project, as you know, is a good project with long term benefits for the resource and the Department appreciates the opportunity to consult early during project development.
↓

↑ One aspect that I have added is to add a seine (BMP 25) above and below the crossing areas as added protection. Once the seines or nets are placed, the biologist can remove any aquatic species that may be impacted out of the temporary crossing (or double check the area is clear).
↓

Let me know if you have any questions.

Thanks,

Dan

Standard Conditions BMPs

1. Vegetation removed from the stream shall not be stockpiled in the stream bed or on its bank. The sites selected on which to push this material out of the stream should be selected in compliance with the other provisions of this Agreement. Where possible brush piles shall be left outside the channel in upland areas to provide wildlife habitat.
2. Staging/storage areas for equipment and materials shall be located outside of the stream/lake.
3. Only a rubber tire vehicles and equipment shall be driven within the channel. The vehicles and equipment shall be clean and free of any weed seeds.
4. Access to the work site shall be via existing roads and access ramps. If no ramps are available in the immediate area, the Operator may construct a ramp in the footprint of the project. Any ramp shall be removed upon completion of the project.
5. To facilitate restoration, the Operator shall salvage native topsoil (the top 6 to 12 inch deep layer containing organic material) from the worksite prior to construction. Following construction, salvaged topsoil shall be returned to the work area/placed in the restoration site.
6. The Department recommends the following methods for salvaging, stockpiling, and replacing topsoil: Salvaged topsoil material should be stockpiled in a location where it is unlikely to be disturbed during construction in piles which do not exceed 8 feet in height (3 feet if stored more than one year); The soil should be maintained in a weed-free condition during storage; Following completion of construction, the topsoil should be tested to determine if it is suitable for restoration, and amended if necessary to encourage growth; Graded slopes should be maintained in a weed free state prior to revegetation; Construction areas should be prepared in a manner so as to prevent soil compaction in the upper 1-2 feet; A minimum 4 inch deep layer of topsoil should be distributed in the area to be revegetated; and the area should be rolled with a sheepsfoot roller to bind the soil layers.
7. Spoil storage sites shall not be located within a stream/lake, where spoil can be washed back into a stream/lake, or where it will cover aquatic or riparian vegetation.
8. Installation of bridges, culverts, or other structures shall be such that water flow (velocity and low flow channel width) is not impaired. Bottoms of temporary culverts shall be placed at or below stream channel grade. Bottoms of permanent culverts shall be placed below stream channel grade.

9. Structures and associated materials not designed to withstand high water flows shall be moved to areas above high water before such flows occur.

10. Any materials placed in seasonally dry portions of a stream or lake that could be washed downstream or could be deleterious to aquatic life shall be removed from the project site prior to inundation by high flows.

11. Areas of disturbed soils with slopes toward a stream or lake shall be stabilized to reduce erosion potential. Planting, seeding and mulching is conditionally acceptable. Where suitable vegetation cannot reasonably be expected to become established, non-erodible materials, such as coconut fiber matting, shall be used for such stabilization. Any installation of non-erodible materials not described in the original project description shall be coordinated with the Department. Coordination may include the negotiation of additional Agreement provisions for this activity.

12. If vacuum trucks are used to clean up any contamination, the vacuum hose shall be placed in a 3 to 4 square foot area, protected on all side by exclusionary fencing to prevent the uptake of any aquatic life.

13. No debris, soil, silt, sand, bark, slash, sawdust, rubbish, construction waste, cement or concrete or washings thereof, oil or petroleum products or other organic or earthen material from any logging, construction, or associated activity of whatever nature shall be allowed to enter into or placed where it may be washed by rainfall or runoff into, waters of the State. When operations are completed, any excess materials or debris shall be removed from the work area. No rubbish shall be deposited within 150 feet of the high water mark of any stream or lake.

14. The Operator shall comply with all litter and pollution laws. All contractors, subcontractors and employees shall also obey these laws and it shall be the responsibility of the operator to insure compliance. Daily cleanup of trash that may attract wildlife shall be conducted at the end of the work day and shall be removed or placed in covered trash containers to minimize potential temporary impacts to local wildlife populations.

15. Any equipment or vehicles driven and/or operated within or adjacent to the stream/lake shall be checked and maintained daily, to prevent leaks of materials that if introduced to water could be deleterious to aquatic life.

16. Stationary equipment such as motors, pumps, generators, and welders, located within or adjacent to the stream/lake shall be positioned over drip pans.

17. No equipment maintenance shall be done within or near any stream channel or lake margin where petroleum products or other pollutants from the

equipment may enter these areas under any flow.

18. The clean-up of all spills shall begin immediately. The Department shall be notified immediately by the Operator of any spills and shall be consulted regarding clean-up procedures.

19. Raw cement/concrete or washings thereof, asphalt, paint, construction waste, or other coating material, oil or other petroleum products, or any other substances which could be hazardous to aquatic life, resulting from project related activities, shall be prevented from contaminating the soil and/or entering the waters of the state. Any of these materials, placed within or where they may enter a stream or lake, by the Operator or any party working under contract, or with the permission of the Operator, shall be removed immediately.

20. Precautions to minimize turbidity/siltation shall be taken into account during project planning and shall be installed **prior** to construction. This may require that the work site be isolated and that water be diverted around the work area by means of a barrier, temporary culvert, new channel, or other means approved by the Department. Precautions may also include placement of silt fencing, straw bales, sand bags, and/or the construction of silt catchment basins, so that silt or other deleterious materials are not allowed to pass to downstream reaches. The method used to prevent siltation shall be monitored and cleaned/repaired weekly. The placement of any structure or materials in the stream for this purpose, not included in the original project description, or Department approved water pollution/water diversion plan shall be coordinated with the Department.

21. Upon Department determination that turbidity/siltation levels resulting from project related activities constitute a threat to aquatic life, activities associated with the turbidity/siltation, shall be halted until effective Department approved control devices are installed, or abatement procedures are initiated.

22. Prior to commencing construction, the Operator shall submit to the Department for review and approval, the proposed water diversion/water pollution control plan for this project. The plan shall be consistent with the terms and conditions of this Agreement and the requirements of the U.S. Army Corps of Engineers and Regional Water Quality Control Board. Any terms and conditions in the final Agency approved water diversion/water pollution plan which are more restrictive than in this agreement shall be a part of this Agreement and shall be enforceable by the Department. Any changes in the original project description or Department approved water pollution/water diversion plan shall be coordinated with the Department. Coordination shall include the negotiation of additional Agreement provisions.

23. Preparation shall be made so that runoff from steep, erodible surfaces will be diverted into stable areas with little erosion potential. Frequent water checks

shall be placed on dirt roads, cat tracks, or other work trails to control erosion.

24. Water containing mud, silt, or other pollutants from equipment washing or other activities, shall not be allowed to enter a lake or flowing stream or placed in locations that may be subjected to high storm flows.

25. When operations require moving of equipment across a flowing stream, such operations shall be conducted without substantially increasing stream turbidity. For repeated crossing locations an upstream and downstream seine shall be placed each work day and the crossing area surveyed for aquatic species. Species should be moved upstream of the crossing prior to work for the day. At the end of the daily work period the seines should be removed to avoid inadvertently trapping aquatic species.

26. If a stream's low flow channel, bed or banks/lake bed or banks have been altered, these shall be returned as nearly as possible to their original configuration and width, without creating future erosion problems.

27. If a stream channel has been altered during the operations, its low flow channel shall be returned, as nearly as possible, to pre-project conditions without creating a possible future bank erosion problem, or a flat wide channel or sluice-like area. If a lake margin has been altered, it shall be returned as nearly as possible to pre-project conditions without creating a future bank erosion problem. The gradient of the streambed or lake margin shall be returned to pre-project grade unless such operation is part of a restoration project, in which case, the change in grade must be approved by the Department prior to project commencement.

28. Rock, gravel, and/or other materials shall not be imported to, taken from or moved within the bed or banks of the stream, except as otherwise addressed in this Agreement.

STAFF RESPONSE
TO
PUBLIC COMMENTS

Conejo Creek Pedestrian Bridge
Final Mitigated Negative Declaration

Staff Response to Public Comments

The public review period for this environmental document extended from August 6, 2010 through August 26, 2010. During this time, comments were received from one commenter in two separate e-mails. The text of these comments is included in the Public Comment Section which immediately precedes this section. Each comment is briefly paraphrased prior to the response in this section.

e-mail Dated: August 24, 2010; Dan Blankenship, California Department of Fish and Game (CDFG).

1. The commenter concurs with the mitigation measures contained in the Initial Study and notes that it would be preferable to align the bridge with one of the existing openings in the tree line so that there will be no need to remove woody vegetation. The commenter points out that the CDFG's jurisdiction covers the bed, bank and channel, including riparian buffer and that if vegetation needs to be removed to allow access within the riparian zone, CDFG would have to be notified using a streambed alteration notification form.

These comments are noted. The bridge will be located so that no woody or herbaceous riparian vegetation is affected. Although the exact location of the bridge abutments has not been determined as yet, much of the vegetation in the area consists of weedy exotics such as eucalyptus and castor bean. In the event that the removal of riparian vegetation is found to be necessary, the City will file a streambed alteration notification form.

e-mail Dated: August 27, 2010; Dan Blankenship, California Department of Fish and Game (CDFG).

1. The commenter notes that due to the implementation of the mitigation measures, a streambed alteration notification will not be necessary if riparian habitat is not impacted. He requests that he be contacted prior to construction and indicates he would like to be on site during construction. He includes a list of Best Management Practices (BMP's) to augment the Mitigation Measures. The commenter notes that the project is a good project with long term benefits for the resource and appreciates being notified by COSCA early in the process.

These comments are noted. The City welcomes the involvement of CDFG and will keep them apprised as the project moves ahead. The BMP's will be incorporated as Conditions of Approval to supplement the mitigation measures.

2. The commenter suggests that when heavy equipment is required to cross the stream, a seine net be utilized above and below the temporary crossing as added protection for aquatic organisms.

This comment is noted and the use of seine nets will be incorporated at a Condition of Approval.

H:Conejo Creek Pedestrian Bridge RTC

FINAL MITIGATED NEGATIVE DECLARATION



Case: Proposed Conejo Creek Pedestrian Bridge

Proponent: Conejo Open Space Conservation Agency (COSCA)

Request: To allow the construction of a pedestrian bridge across Conejo Creek.

Location: In the northwest quadrant of the City of Thousand Oaks, on the west side of Hill Canyon Road, approximately 3,200 ft south of Santa Rosa Road and approximately 1.1 miles north of the Hill Canyon Wastewater Treatment Plant.

Initial Study Determination / CEQA Findings

As required under the provisions set forth in Section 15063 of the California Environmental Quality Act (CEQA) Guidelines, an Initial Study has been prepared by the City of Thousand Oaks. The Initial Study, which is attached, evaluates the potential effects of this proposed project on the environment. Although the Initial Study has determined that the proposed project could have a potentially significant impact on the environment, feasible mitigation measures have been identified that will either avoid, or reduce them to a level of insignificance. Based on these findings, a Mitigated Negative Declaration (MND) has been prepared for the proposed project in compliance with the provisions set forth in Section 15070 of the CEQA Guidelines as amended.

Contact Person / Public Review Period

The contact person for this MND is: Richard A. Burgess. The public review period is 20 days. Comments are solicited and must be submitted in writing to the Community Development Department, 2100 E. Thousand Oaks Blvd., Thousand Oaks, California 91362-2903, no later than: August 26, 2010.

Draft Mitigated Negative Declaration Issued

Date: Aug. 6, 2010 Signature: Richard A. Burgess

Final Mitigated Negative Declaration Issued

- Public Comments and Staff Response Included in Final MND
 No Comments Received

Date: Aug. 27, 2010 Signature: Richard A. Burgess

USE OF INITIAL STUDY

The Initial Study is intended to provide information for analysis of the project's environmental effects. Determining the significance of environmental impacts is a critical and often controversial aspect of the environmental review process. It is critical because a determination of significance may require that the project be either substantially altered, or that feasible mitigation measures be employed to avoid the impact or reduce it below the level of significance. Where a project is revised in response to an Initial Study so that potential adverse effects are effectively mitigated, a Negative Declaration shall be prepared instead of an EIR. If the project will still result in one or more significant effects on the environment after mitigation measures are added to the project, an EIR shall be prepared. Correspondingly, the Initial Study also provides documentation of the factual basis for making the finding that the project will, or will not have a significant effect on the environment.

INITIAL STUDY DETERMINATION

- I find **the** proposed project will not have a significant effect on the environment. Therefore, a **NEGATIVE DECLARATION** will be prepared.
- I find that although the proposed project could have a potentially significant effect on the environment, feasible mitigation measures have been recommended that will either avoid such effects, or reduce them to a level of insignificance. Therefore, a **MITIGATED NEGATIVE DECLARATION** will be prepared.
- I find the proposed project may have one or more significant effects on the environment, which cannot be avoided or mitigated to a level of insignificance. Therefore, preparation of an **ENVIRONMENTAL IMPACT REPORT** is required.
- I find that although an earlier referenced environmental document has been prepared, resultant minor changes in the project design, environmental effects or mitigation measures, require that an **ADDENDUM** be prepared in order to address these modifications.
- I find that although an earlier referenced environmental document has been prepared, significant new information has become available pertaining to one or more potential effects of the proposed project, which could not have been known at that time and therefore were not addressed. As a result, a **SUPPLEMENT** will be prepared to analyze these new effects and recommend feasible mitigation measures.
- I find that all potentially significant effects have been adequately analyzed in an earlier referenced environmental document and that there are no new, or previously unknown, potentially significant effects associated with the proposed project that require additional mitigation or avoidance. Therefore, no further analysis is required.

INITIAL STUDY

1. Project Title: Conejo Creek Pedestrian Bridge
2. Lead Agency Name and Address: Conejo Open Space Conservation Agency (COSCA), 2100 E. Thousand Oaks Blvd., Thousand Oaks, CA 91362
3. Contact Person and Phone Number: Richard A. Burgess, Senior Planner, (805) 449-2326
4. Project location: In the northwest quadrant of the City of Thousand Oaks, on the west side of Hill Canyon Road, approximately 3,200 ft south of Santa Rosa Road and approximately 1.1 miles north of the Hill Canyon Wastewater Treatment Plant. (See Location Map, Exhibit A).
5. Project sponsor's name and address: Conejo Open Space Conservation Agency (COSCA), 2100 E. Thousand Oaks Blvd., Thousand Oaks, CA 91362
6. General Plan and Zoning Designation: The Land Use Element of the General Plan designates the site as Existing Parks, Golf Courses, Open Space and the property is zoned Open Space (OS).
7. Description of the project:

The Conejo Open Space Conservation Agency (COSCA) is proposing to construct a pedestrian bridge across Conejo Creek to provide trail access for hikers, bicyclists and equestrians and to keep trail users off the paved portion of Hill Canyon Road. The bridge was identified in COSCA's Conejo Canyons Management Plan as a high priority open space amenity for improving public access and is a key component of the trail system in the northern portion of the Conejo Canyons Open Space area (See Project Description and Vicinity Maps, Appendix A). The property where the bridge is planned is owned by the City of Thousand Oaks and managed by COSCA.

The proposed bridge is approximately 10.75 feet in width and one hundred forty five feet in length. Although the bridge will be used principally by hikers, bicyclists and equestrians, it will also provide access for emergency and maintenance vehicles. The structure is a prefabricated steel truss bridge with a wooden beam walking surface and it will be secured to concrete abutments on either side of the creek. There will be no supports in the creek. The abutments will be poured on-site at or above 240 feet in elevation. This elevation is outside of the 100 foot floodplain level, therefore a Fish and Game Department Streambed Alteration Permit will not be required. The location allows for gradual approaches to the bridge on either side so it will be ADA accessible. Bridge schematics and a photograph depicting the appearance of the bridge are included in Appendix B.

Construction is anticipated to take approximately 45 days and will involve a crew of five workers. Construction equipment will include one 100 Kip crane, one backhoe, one pile driver and/or drill rig. Minimal grading for the site will involve the import of approximately 150 cubic yards of soil. It will take approximately 11 truck trips to import this material based on trucks of 14 cubic yard capacity.

8. Surrounding land uses and setting:

The subject property is vacant and located just west of Hill Canyon Road. Vegetation in the area consists of sage scrub, grading to ruderal vegetation along the road with riparian woodland along Conejo Creek. The site is surrounded by undeveloped land on all sides.

9. Other public agencies whose approval is required: The California Department of Fish and Game is a Trustee Agency with respect to riparian resources.

POTENTIALLY AFFECTED ENVIRONMENTAL FACTORS

The environmental factors checked below would be potentially affected by this project, involving at least one impact that is considered a potentially significant as indicated by the following checklist:

- | | |
|--|---|
| <input checked="" type="checkbox"/> Aesthetics | <input type="checkbox"/> Hazards & Hazardous Materials |
| <input type="checkbox"/> Transportation/Traffic | <input type="checkbox"/> Public Services |
| <input type="checkbox"/> Land Use/Planning | <input type="checkbox"/> Utilities/Service Systems |
| <input type="checkbox"/> Population/Housing | <input checked="" type="checkbox"/> Hydrology/Water Quality |
| <input type="checkbox"/> Agricultural Resources | <input checked="" type="checkbox"/> Noise |
| <input type="checkbox"/> Other | <input type="checkbox"/> Recreation |
| <input checked="" type="checkbox"/> Geology/Soils | <input type="checkbox"/> Cultural Resources |
| <input checked="" type="checkbox"/> Biological Resources | <input checked="" type="checkbox"/> Air Quality |

ENVIRONMENTAL IMPACT CHECKLIST

AESTHETICS. Would the project:

- a. Have an adverse effect on a scenic vista, scenic highway or prominent ridgeline:

Unavoidable Significant Impact	Less Than Significant With Mitigation	Less Than Significant Impact	No Impact
<input type="checkbox"/>	<input type="checkbox"/>	<input checked="" type="checkbox"/>	<input type="checkbox"/>

Response: The project site is vacant and consists of riparian woodland with sloping terrain on all sides. Large blue gum eucalyptus (*Eucalyptus globulus*) are found in the area combining with native willows and black walnuts to create a fairly dense woodland. The property is rural and not visible from any City designated Scenic Highway. The construction of a bridge in this area is not expected to create a significant viewshed impact. Schematic exterior elevations which give some sense of the mass and scale of the proposed bridge are included in Appendix B. The project is not considered to constitute an adverse impact on a scenic vista, scenic highway or prominent ridgeline.

Mitigation: None required.

- b. Have a demonstrable negative effect on the existing visual character or quality of the site and its surroundings?

Unavoidable Significant Impact	Less Than Significant With Mitigation	Less Than Significant Impact	No Impact
<input type="checkbox"/>	<input type="checkbox"/>	<input type="checkbox"/>	<input checked="" type="checkbox"/>

Response: The project is designed to be unobtrusive and because it is below the elevation of the road will not be particularly noticeable. Any residual impacts can be mitigated through the effective use of native landscaping. Construction of the project is not expected to constitute a significant adverse impact.

Mitigation: None required

- c. Create a new source of substantial light or glare which would adversely affect day or nighttime views in the area?

Unavoidable Significant Impact	Less Than Significant With Mitigation	Less Than Significant Impact	No Impact
<input type="checkbox"/>	<input type="checkbox"/>	<input type="checkbox"/>	<input checked="" type="checkbox"/>

Response: No lighting will be utilized in the vicinity of the bridge.

Mitigation: None required.

AIR QUALITY. Would the project:

a. Exceed any local, state or federal air quality emission threshold or standard?

Unavoidable Significant Impact	Less Than Significant With Mitigation	Less Than Significant Impact	No Impact
<input type="checkbox"/>	<input type="checkbox"/>	<input type="checkbox"/>	<input checked="" type="checkbox"/>

Response: The applicant is proposing the construction of bridge which will have no impact on air quality.

Mitigation: None required.

b. Expose sensitive receptors to potentially unhealthy pollutant concentrations?

Unavoidable Significant Impact	Less Than Significant With Mitigation	Less Than Significant Impact	No Impact
<input type="checkbox"/>	<input type="checkbox"/>	<input checked="" type="checkbox"/>	<input type="checkbox"/>

Response: Construction is anticipated to take 45 days and due to the lack of sensitive receptors and the limited nature of the grading operation, there is little potential for significant impacts. However, in order to ensure that workers as well as sensitive wildlife and vegetation in the project vicinity are not exposed to harmful levels of suspended particulate matter the following mitigation measures are recommended.

Mitigation:

1. Employ water, as needed, for dust control during grading.
2. Cease all grading, clearing, earth moving, or excavation operations during periods of high winds (20 mph or greater in one hour). The Ventura County APCD can be contacted for meteorological information.
3. All trucks shall be required to cover their loads as required by California Vehicle Code, Section 2311.4
4. Personnel involved in grading operations, including contractors and subcontractors, should be advised to wear respiratory protection in accordance with California Division of Occupational Safety and Health regulations.
5. Sweep streets at the end of the day if visible soil material is carried over to adjacent roads.
6. Maintain equipment engines in good condition and in proper tune as per manufacturer's specifications.
7. Keep all grading and construction equipment on or near the site until those phases of development are completed.
8. Equipment idling time shall be minimized.
9. To the extent feasible, use alternately-fueled construction equipment, such as compressed natural gas (CNG), liquefied natural gas (LNG), or electric.

c. Create objectionable odors affecting a substantial number of people?

Unavoidable Significant Impact Less Than Significant With Mitigation Less Than Significant Impact No Impact

Response: The construction of the proposed pedestrian bridge is not expected to create any objectionable odors affecting a substantial number of people.

Mitigation: None required.

BIOLOGICAL RESOURCES. Would the project:

a. Have an adverse effect on any plant or animal species listed by the California Department of Fish and Game or U.S. Fish and Wildlife Service as a sensitive, special status species or rare and/or endangered?

Unavoidable Significant Impact Less Than Significant With Mitigation Less Than Significant Impact No Impact

Response: Staff conducted a biotic inventory of the subject property (See Appendix C) in July, 2010. The timing of this survey was adequate for documenting the presence of any rare, endangered or sensitive species. The field survey failed to reveal any sensitive species, nor is any expected based on the lack of suitable habitat.

Based on a search of the Natural Diversity Data Bank, augmented by the City's own files and field surveys, the following special status wildlife species have the potential of occurring in the study area or have been documented on the Natural Diversity Data Bank for the Newbury Park quadrangle.

SPECIAL STATUS ANIMALS

COMMON NAME/SCIENTIFIC NAME	STATUS	HABITAT	POTENTIAL FOR OCCURRENCE
FISH			
Arroyo chub/ <i>Gila orcutti</i>	CSC	Slow-moving streams with mud or sand bottoms.	Potentially present.
REPTILES			
Southwestern pond turtle/ <i>Clemmys marmorata pallid</i>	FSS/CSC	Permanent water with basking sites.	Potentially present
San Diego Horned lizard/ <i>Phrynosoma coronatum blainvillii</i>	FSS/CSC	Relatively open grasslands, scrublands and woodlands with fine, loose soil.	Not present. No suitable habitat on site.
Coastal western whiptail/ <i>Cnemidophorus tigris muliscutatus</i>	FSS	Open areas in semiarid grasslands, scrublands and woodlands.	Not present. No suitable habitat on site.
San Bernardino ringneck snake/ <i>Diadophis punctatus modestus</i>	FSS	Under debris in oak and riparian woodlands.	Not present. No suitable habitat on site.
Two-striped garter snake/ <i>Thamnophis hammondi</i>	FSS/CSC	Perennial and intermittent streams having rocky or sandy beds, requires dense riparian vegetation.	Not present. No suitable habitat on site.
BIRDS			

Cooper's hawk/ <i>Accipiter cooperi</i>	CSC	Dense riparian woodlands for breeding.	Not present. No suitable habitat on site.
Golden eagle/ <i>Aquila chrysaetos</i>	BEPA;CSC	Open mountains, plains, open country.	Not present. No suitable habitat on site.
Bank swallow/ <i>Riparia riparia</i>	CSC	Nests in large colonies in river banks.	Not present. No suitable habitat on site.
Coastal California Gnatcatcher/ <i>Poliophtila californica californica</i>	FT;CSC	Dense Southern California Coastal Sage Scrub in areas of flat or gently rolling terrain.	Not present. No suitable habitat on site.
Least Bell's vireo/ <i>Vireo bellii pusillus</i> (nesting)	FE;CE	Willow thickets in riparian woodlands.	Present. Suitable habitat on site.
Rufous crowned sparrow/ <i>Aimophila ruficeps canescens</i>	CSC	Arid chaparral and scrub woodlands.	Not present. No suitable habitat on site.
White-tailed kite/ <i>Elanus caeruleus</i>	MBPA;CSC	Open woodlands and grasslands.	Not present. No suitable habitat on site.
Loggerhead shrike/ <i>Lanius ludovicianus</i>	CSC	Open grasslands with scattered shrubs.	Not present. No suitable habitat on site.
California yellow warbler/ <i>Dendroica petechia brewsteri</i>	CSC	Nests in riparian woodland.	Present.
Yellow-breasted chat/ <i>Icteria virens</i>	CSC	Dense willow thickets and riparian woodlands with a dense understory.	Present
MAMMALS			
Yuma myotis/ <i>Myotis yumanensis</i>	FSS	Caves, tunnels, or buildings; arid areas.	Not present. No suitable habitat on site.
Small-footed myotis/ <i>Myotis ciliolabrum</i>	FSS	Caves, tunnels, rock crevices, buildings; forested areas.	Not present. No suitable habitat on site.
Pallid bat/ <i>Antrozous pallidus</i>	CSC	Colonial; roosts in caves, mine tunnels, trees; hibernates in winter.	Not present. No suitable habitat on site.
California mastiff bat/ <i>Eumops perotis californicus</i>	FSS/CSC	Roosts in cliffs, crevices.	Not present. No suitable habitat on site.
San Diego woodrat/ <i>Neotoma lepida intermedia</i>	FSS/CSC	Rocky slopes on sparsely vegetated arid lands.	Not present. No suitable habitat on site.
American badger/ <i>Taxidea taxus</i>	CSC	Grasslands and open areas.	Not present. No suitable habitat on site.

Status Codes:

Federal

FSS: Federal sensitive species.

FE: Federal endangered species.

FT: Federal threatened species

MBPA: Migratory Bird Protection Act

BEPA: Bald Eagle Protection Act.

State

CE: California Endangered

CSC: California Species of Special Concern

All of the special status animal species noted above, are found in the Hill Canyon area. However, few are actually found on the project site. As previously noted the site is a cross section of Conejo Creek which will be wide enough to construct a bridge. Soil in the area consists of alluvium and the vegetation is predominantly introduced eucalyptus trees and other ruderal plants such as castor bean. Although work in the Arroyo Conejo will be kept to a minimum, heavy equipment will have to cross the stream periodically, thus, there is the potential that aquatic species such as the arroyo chub and the southwestern pond turtle may be disturbed by construction activities. In addition, construction activity would have the potential to disturb nesting birds in the project vicinity. The least Bell's vireos, California yellow warbler and the yellow breasted chat

have been observed by City staff and others in the project vicinity. It should be noted that these species are migratory and are not present in the winter. Mitigation will be required.

SPECIAL STATUS PLANTS

COMMON NAME/SCIENTIFIC NAME	STATUS	HABITAT	POTENTIAL FOR OCCURRENCE
Lyon's pentachaeta/ <i>Pentachaeta lyonii</i>	FE/CE/CNPS 1B	Clay soils with cryptogamic crust in Southern California grassland or coastal sage scrub.	Not present. No suitable habitat on site.
Conejo dudleya/ <i>Dudleya parva</i>	FT/CNPS 1B	North-facing clay soils or volcanic bluffs.	Not present. No suitable habitat on site.
Bochman's dudleya/ <i>Dudleya blochmaniae</i> ssp. <i>blochmaniae</i>	CNPS 1B	Clay soils with cryptogamic crust in Southern California grassland or coastal sage scrub.	Not present. No suitable habitat on site.
Rayless ragwort/ <i>Senecio aphanactis</i>	CNPS 2	Clay soils with cryptogamic crust in Southern California grassland or coastal sage scrub.	Not present. No suitable habitat on site.
Small-flowered morning glory/ <i>Convolvulus simulans</i>	CNPS 4	Clay soils with cryptogamic crust in Southern California grassland.	Not present. No suitable habitat on site.
Conejo buckwheat/ <i>Eriogonum crocatum</i>	CR/CNPS 1B	North-facing volcanic bluffs.	Not present, but occurs in close proximity.
Catalina mariposa lily/ <i>Calochortus catalinae</i>	CNPS 4	Clay soils in Southern California grassland.	Not present. No suitable habitat on site.
Plummer's mariposa lily/ <i>Calochortus plummerae</i>	CNPS 1B	Rocky, sandy sites in coastal sage scrub or grassland.	Not present. No suitable habitat on site.
Southern California black walnut/ <i>Juglans californica</i>	CNPS 4	Alluvial soils in cismontane woodland.	Present on site.

Status Codes:

CNPS 1B: California Native Plant Society, Plants Rare, Threatened, or Endangered in California and Elsewhere

CNPS 2: Rare or Endangered in California, More Common Elsewhere

CNPS 4: Plants of Limited Distribution

CE: State-listed Endangered

CR: State-listed Rare

FE: Federally-listed Endangered

FT: Federally-listed Threatened

All of the sensitive plant species noted above are known to occur within open space administered by COSCA in the project vicinity, however, none will be affected by project construction. Like many of the sensitive species found in the Conejo Valley, the majority of these plants are edaphic endemics which require volcanic bluffs or undisturbed, vernal moist clay soils with a cryptogamic crust. As noted above, soils in the project site consist of alluvium and the vegetation has been degraded by the presence of introduced species such as eucalyptus and castor bean.

A small population of Conejo buckwheat (*Eriogonum crocatum*), a State-listed rare plant, occurs on a volcanic slope, immediately across Hill Canyon Road from the project site. This site will be fenced during construction to avoid any unintended disturbance to the plants.

Mitigation:

1. If project activities take place between February 1 and September 1, breeding bird surveys should be conducted and active nests should be

avoided and provided with a minimum buffer as determined by a qualified biological monitor. The California Department of Fish and Game recommends a minimum 500 foot buffer for all active raptor nests and 300 feet for other bird species.

2. The population of Conejo buckwheat shall be fenced during construction to avoid any disturbance to the plants.
3. During periods where heavy equipment must cross the Arroyo Conejo drainage, a qualified biological monitor shall be on hand to ensure that no harm comes to aquatic species in the stream.

b. Have a substantial adverse effect on any jurisdictional riparian or wetland vegetation?

Unavoidable Significant Impact	Less Than Significant With Mitigation	Less Than Significant Impact	No Impact
<input type="checkbox"/>	<input type="checkbox"/>	<input type="checkbox"/>	<input checked="" type="checkbox"/>

Response: The construction of the pedestrian bridge will not involve grading or construction within the streambed. The bridge abutments will be poured on-site at or above 240 feet in elevation. This elevation is outside of the 100 year floodplain level and is above riparian vegetation lining the creek, therefore a Streambed Alteration Permit from the California Department of Fish and Game will not be required. The bridge construction will not have a substantial adverse effect on jurisdictional riparian or wetland vegetation.

Mitigation: None required.

c. Substantially Interfere with, or create a barrier to the movement of wildlife?

Unavoidable Significant Impact	Less Than Significant With Mitigation	Less Than Significant Impact	No Impact
<input type="checkbox"/>	<input type="checkbox"/>	<input type="checkbox"/>	<input checked="" type="checkbox"/>

Response: The construction of a pedestrian bridge across the Arroyo Conejo is not expected to interfere with, or create a barrier to a wildlife movement corridor.

Mitigation: None required.

d. Conflict with any General Plan Policies or City Ordinances intended to protect native oak or landmark trees?

Unavoidable Significant Impact	Less Than Significant With Mitigation	Less Than Significant Impact	No Impact
<input type="checkbox"/>	<input type="checkbox"/>	<input type="checkbox"/>	<input checked="" type="checkbox"/>

Response:

While there are coast live oak (*Quercus agrifolia*), and the designated landmark trees toyon (*Heteromeles arbutifolia*) and Southern California black walnut

(*Juglans californica*) in the project vicinity, none of these trees will be affected by project construction.

Mitigation: None required.

CULTURAL RESOURCES. Would the project:

- a. Cause the loss or adversely affect a significant historical resource?

Unavoidable Significant Impact	Less Than Significant With Mitigation	Less Than Significant Impact	No Impact
<input type="checkbox"/>	<input type="checkbox"/>	<input type="checkbox"/>	<input checked="" type="checkbox"/>

Response: The proposed location of the bridge does not contain any structures, historic or otherwise.

Mitigation: None required.

- b. Result in the loss, partial destruction or secondary impacts to a significant archaeological resource?

Unavoidable Significant Impact	Less Than Significant With Mitigation	Less Than Significant Impact	No Impact
<input type="checkbox"/>	<input type="checkbox"/>	<input checked="" type="checkbox"/>	<input type="checkbox"/>

Response: Based on a review of the City's Sensitive Cultural Resource map, the project area is not expected to harbor any previously undiscovered cultural resources.

Mitigation:

1. In the event that previously undiscovered cultural resources are encountered during construction grading, all work within the immediate vicinity shall be suspended until adequate measures can be implemented to mitigate adverse impacts as per Sub-section 7-3.09 (I) of the Thousand Oaks Municipal Code.

- c. Directly or indirectly cause the loss of a unique paleontological resource?

Unavoidable Significant Impact	Less Than Significant With Mitigation	Less Than Significant Impact	No Impact
<input type="checkbox"/>	<input type="checkbox"/>	<input type="checkbox"/>	<input checked="" type="checkbox"/>

Response: No fossil bearing subsurface sedimentary bedrock or surface outcroppings are present on site.

Mitigation: None required.

- d. Disturb or displace any human remains, including those interred outside formal cemeteries by Native Americans.

Unavoidable Significant Impact	Less Than Significant With Mitigation	Less Than Significant Impact	No Impact
<input type="checkbox"/>	<input type="checkbox"/>	<input type="checkbox"/>	<input checked="" type="checkbox"/>

Response: As noted above, the project is not expected to harbor any significant cultural remains.

Mitigation: None required.

GEOLOGY AND SOILS. Would the project

- a. Expose people or structures to potential substantial adverse effects, due to strong seismic ground shaking or rupture of a known earthquake fault?

Unavoidable Significant Impact	Less Than Significant With Mitigation	Less Than Significant Impact	No Impact
<input type="checkbox"/>	<input type="checkbox"/>	<input type="checkbox"/>	<input checked="" type="checkbox"/>

Response: No known active or potentially active earthquake faults are located on, or near, the project site. However, the pedestrian bridge is not a residential structure and is not subject to the seismic requirements of the Uniform Building Code (UBC).

Mitigation: None required.

- b. Be exposed to, or adversely affected by seismic-related ground failure, including liquefaction?

Unavoidable Significant Impact	Less Than Significant With Mitigation	Less Than Significant Impact	No Impact
<input type="checkbox"/>	<input type="checkbox"/>	<input type="checkbox"/>	<input checked="" type="checkbox"/>

Response: As noted above, the pedestrian bridge is not a habitable structure and is not subject to the seismic requirements of the Uniform Building Code.

Mitigation: None required.

- c. Expose people or structures, either directly or indirectly, to landslides or other types of geotechnical hazards?

Unavoidable Significant Impact	Less Than Significant With Mitigation	Less Than Significant Impact	No Impact
<input type="checkbox"/>	<input type="checkbox"/>	<input type="checkbox"/>	<input checked="" type="checkbox"/>

Response: The subject property is not subject to landslides or other types of geotechnical hazards.

Mitigation: None required.

GRADING AND TOPOGRAPHC MODIFICATION. Would the project:

- a. Result in encroachment into natural terrain exceeding 25% twenty-five percent gradient?

Unavoidable Significant Impact	Less Than Significant With Mitigation	Less Than Significant Impact	No Impact
<input type="checkbox"/>	<input type="checkbox"/>	<input type="checkbox"/>	<input checked="" type="checkbox"/>

Response: The bridge abutments will be poured on site and will involve little significant grading. There will be no significant encroachment in terrain exceeding 25% gradient.

Mitigation: None required.

- b. Result in the creation of any manufactured cuts or fills exceeding twenty-five (25') feet in height?

Unavoidable Significant Impact	Less Than Significant With Mitigation	Less Than Significant Impact	No Impact
<input type="checkbox"/>	<input type="checkbox"/>	<input type="checkbox"/>	<input checked="" type="checkbox"/>

Response: The construction of manufactured slopes exceeding twenty-five feet in height is not anticipated in this project.

Mitigation: None required.

- c. Require the import or export of earthen soil or rock materials to, or from the site?

Unavoidable Significant Impact	Less Than Significant With Mitigation	Less Than Significant Impact	No Impact
<input type="checkbox"/>	<input type="checkbox"/>	<input checked="" type="checkbox"/>	<input type="checkbox"/>

Response: According to the project engineer, project grading will result in the import or approximately 150 cubic yards of soil. It will take approximately 11 truck trips to import this material based on trucks of 14 cubic yard capacity.

Mitigation: The grading contractor shall adhere to a haul route approved by the Public Works Department prior to the issuance of a grading permit. The approved haul route shall be designed to import the soil to the site while minimizing impacts to residential roads and commuter routes during peak traffic hours.

HAZARDS AND HAZARDOUS MATERIALS. Would the project:

- a. Create a significant hazard to the public or the environment through the routine transport, use, or disposal of hazardous materials?

Unavoidable Significant Impact	Less Than Significant With Mitigation	Less Than Significant Impact	No Impact
<input type="checkbox"/>	<input type="checkbox"/>	<input type="checkbox"/>	<input checked="" type="checkbox"/>

Response: The project involves construction of a bridge and will not require the routine transport, use or disposal of hazardous materials.

Mitigation: None required.

- b. Pose a significant biological hazard due to a reasonably foreseeable upset or conditions involving the release of hazardous materials into the environment?

Unavoidable Significant Impact	Less Than Significant With Mitigation	Less Than Significant Impact	No Impact
<input type="checkbox"/>	<input type="checkbox"/>	<input type="checkbox"/>	<input checked="" type="checkbox"/>

Response: The project involves construction of a bridge and will not pose a significant biological hazard involving the release of hazardous materials into the environment.

Mitigation: None required.

- c. Emit hazardous emissions or substances, within one-quarter mile of an existing or proposed school?

Unavoidable Significant Impact	Less Than Significant With Mitigation	Less Than Significant Impact	No Impact
<input type="checkbox"/>	<input type="checkbox"/>	<input type="checkbox"/>	<input checked="" type="checkbox"/>

Response: The project involves construction of a bridge and will not result in significant hazardous emissions.

Mitigation: None required.

- d. Be located on or near a leaking underground fuel tank site which is included on a Ventura County Environmental Health Department LUFT list?

Unavoidable Significant Impact	Less Than Significant With Mitigation	Less Than Significant Impact	No Impact
<input type="checkbox"/>	<input type="checkbox"/>	<input type="checkbox"/>	<input checked="" type="checkbox"/>

Response: There are no service stations or leaking underground fuel tanks in the project vicinity.

Mitigation: None required.

- e. Interfere directly or indirectly with an adopted emergency response plan or emergency evacuation plan?

Unavoidable Significant Impact Less Than Significant With Mitigation Less Than Significant Impact No Impact

Response: There are no adopted emergency response plans or evacuation plans which will be affected by the proposal.

Mitigation: None required.

- f. Expose people or structures to a significant risk of loss, injury or death involving wildland fire?

Unavoidable Significant Impact Less Than Significant With Mitigation Less Than Significant Impact No Impact

Response: The proposed project will not expose people to a significant risk involving wildland fire, however, it may increase safety by providing a more accessible mode of escape for hikers, bicyclists and equestrians in the event of a wildland fire.

Mitigation: None required.

HYDROLOGY AND WATER QUALITY. Would the project:

- a. Violate any state or federal water quality standards or waste discharge requirements?

Unavoidable Significant Impact Less Than Significant With Mitigation Less Than Significant Impact No Impact

Response: The project will be constructed outside of the 100 foot floodplain level and will not violate any state or federal water quality standards or waste discharge requirements.

Mitigation: None required.

- b. Substantially deplete ground water supplies or interfere with groundwater recharge?

Unavoidable Significant Impact Less Than Significant With Mitigation Less Than Significant Impact No Impact

Response: The project is not expected to have any effect on or be affected by ground water.

Mitigation: None required.

- c. Substantially alter the existing natural drainage pattern of the site or area?

Unavoidable Significant Impact	Less Than Significant With Mitigation	Less Than Significant Impact	No Impact
<input type="checkbox"/>	<input type="checkbox"/>	<input type="checkbox"/>	<input checked="" type="checkbox"/>

Response: The project will not be constructed in the drainage channel and will not alter the existing natural drainage pattern of the site.

Mitigation: None required.

- d. Substantially increase the rate of surface water runoff which would result in flooding, erosion or sedimentation?

Unavoidable Significant Impact	Less Than Significant With Mitigation	Less Than Significant Impact	No Impact
<input type="checkbox"/>	<input type="checkbox"/>	<input type="checkbox"/>	<input checked="" type="checkbox"/>

Response: As noted, project grading will take place outside of the drainage channel and will be restricted to grading necessary for the concrete abutments and access roads. There will be no significant increase in impervious surfaces, consequently, the project is not expected to result in flooding, erosion or sedimentation.

Mitigation: None required.

- e. Exceed the capacity of existing stormwater drainage systems, thereby exposing people or structures to significant risk, injury or loss?

Unavoidable Significant Impact	Less Than Significant With Mitigation	Less Than Significant Impact	No Impact
<input type="checkbox"/>	<input type="checkbox"/>	<input type="checkbox"/>	<input checked="" type="checkbox"/>

Response: Due to its small size, the project will have no effect on the capacity of existing stormwater drainage systems.

Mitigation: None required.

- f. Construct housing within a 100-year flood hazard area as delineated on a federal Flood Hazard Boundary or Flood Insurance Rate Map?

Unavoidable Significant Impact	Less Than Significant With Mitigation	Less Than Significant Impact	No Impact
<input type="checkbox"/>	<input type="checkbox"/>	<input type="checkbox"/>	<input checked="" type="checkbox"/>

Response: Portions of Hill Canyon Road are within the 100-year flood hazard area, however, because the construction involves a pedestrian bridge and not a habitable structure, no impact is anticipated.

Mitigation: None required.

LAND USE AND PLANNING. Would the project:

- a. Physically divide an established community or conflict with a General Plan designation or zoning?

Unavoidable Significant Impact	Less Than Significant With Mitigation	Less Than Significant Impact	No Impact
<input type="checkbox"/>	<input type="checkbox"/>	<input type="checkbox"/>	<input checked="" type="checkbox"/>

Response: The property is vacant and does not support an established community. The Land Use Element of the General Plan designates the site as existing Parks, Golf Courses, Open Space and the property is zoned Open Space(OS). The construction of a pedestrian bridge is compatible with these provisions.

Mitigation: None required.

- b. Conflict with any applicable environmental plans or policies of any agency with jurisdiction over the project?

Unavoidable Significant Impact	Less Than Significant With Mitigation	Less Than Significant Impact	No Impact
<input type="checkbox"/>	<input type="checkbox"/>	<input type="checkbox"/>	<input checked="" type="checkbox"/>

Response: The proposal will not conflict with any environmental plans or policies of any agency with jurisdiction over the project. Mitigation measures included in the Biology section above, will insure that no significant impacts will occur to resources within the jurisdiction of the California Department of Fish and Game.

Mitigation: None required.

POPULATION AND HOUSING. Would the project:

a. Exceed official regional or local population projections?

Unavoidable Significant Impact	Less Than Significant With Mitigation	Less Than Significant Impact	No Impact
<input type="checkbox"/>	<input type="checkbox"/>	<input type="checkbox"/>	<input checked="" type="checkbox"/>

Response: The proposal will have no effect on local population projections.

Mitigation: None required.

b. Induce substantial growth outside the City's Planning Area, Urban Growth Limits, or Sphere of Influence boundaries?

Unavoidable Significant Impact	Less Than Significant With Mitigation	Less Than Significant Impact	No Impact
<input type="checkbox"/>	<input type="checkbox"/>	<input type="checkbox"/>	<input checked="" type="checkbox"/>

Response: The project is not expected to result in any growth either inside or outside the City.

Mitigation: None required.

c. Displace existing housing, especially affordable housing?

Unavoidable Significant Impact	Less Than Significant With Mitigation	Less Than Significant Impact	No Impact
<input type="checkbox"/>	<input type="checkbox"/>	<input type="checkbox"/>	<input checked="" type="checkbox"/>

Response: There is no residential development either affordable or market rate on the property.

Mitigation: None required.

ENERGY AND MINERAL RESOURCES. Would the project:

a. Result in the loss of availability of a known mineral resource that would be of a value to the region, or the residents of the state?

Unavoidable Significant Impact	Less Than Significant With Mitigation	Less Than Significant Impact	No Impact
<input type="checkbox"/>	<input type="checkbox"/>	<input type="checkbox"/>	<input checked="" type="checkbox"/>

Response: The region does not contain any significant mineral resources.

Mitigation: None required.

b. Conflict with any energy conservation plans?

Unavoidable Significant Impact	Less Than Significant With Mitigation	Less Than Significant Impact	No Impact
<input type="checkbox"/>	<input type="checkbox"/>	<input type="checkbox"/>	<input checked="" type="checkbox"/>

Response: The proposed project will not have any effect on energy conservation plans.

Mitigation: None required.

c. Use non-renewable resources in a wasteful inefficient manner?

Unavoidable Significant Impact	Less Than Significant With Mitigation	Less Than Significant Impact	No Impact
<input type="checkbox"/>	<input type="checkbox"/>	<input type="checkbox"/>	<input checked="" type="checkbox"/>

Response: The proposal is not expected to result in the use of non-renewable resources in a wasteful or inefficient manner.

Mitigation: None required.

NOISE. Would the project:

a. Expose persons to noise levels in excess of standards established in the General Plan or City's Noise Ordinance?

Unavoidable Significant Impact	Less Than Significant With Mitigation	Less Than Significant Impact	No Impact
<input type="checkbox"/>	<input type="checkbox"/>	<input type="checkbox"/>	<input checked="" type="checkbox"/>

Response: The project will not result in any significant long-term increase in ambient noise levels.

Mitigation: None required.

b. Expose people to severe short-term construction noise impacts?

Unavoidable Significant Impact	Less Than Significant With Mitigation	Less Than Significant Impact	No Impact
<input type="checkbox"/>	<input type="checkbox"/>	<input checked="" type="checkbox"/>	<input type="checkbox"/>

Response: Existing ambient noise levels are expected to periodically peak during the construction phase, however, there are no sensitive land uses located near the site. Due to the short-term nature of these events, this impact is not considered to be significant.

Mitigation: None required

- c. Result in a significant, 3 dBA or greater, cumulative increase in ambient noise levels?

Unavoidable Significant Impact	Less Than Significant With Mitigation	Less Than Significant Impact	No Impact
<input type="checkbox"/>	<input type="checkbox"/>	<input type="checkbox"/>	<input checked="" type="checkbox"/>

Response: The project will have no effect on ambient noise levels

Mitigation: None required.

PUBLIC SERVICES. Would the project:

Result in substantial impacts associated with the provision of new or expanded:

- a. Fire Protection Services?

Unavoidable Significant Impact	Less Than Significant With Mitigation	Less Than Significant Impact	No Impact
<input type="checkbox"/>	<input type="checkbox"/>	<input type="checkbox"/>	<input checked="" type="checkbox"/>

Response: The proposal will not result in the need for new or expanded fire protection service beyond what is already received in the area.

Mitigation: None required.

- b. Police Protection Services?

Unavoidable Significant Impact	Less Than Significant With Mitigation	Less Than Significant Impact	No Impact
<input type="checkbox"/>	<input type="checkbox"/>	<input type="checkbox"/>	<input checked="" type="checkbox"/>

Response: The proposal will not result in the need for new or expanded police service beyond what is already received in the area.

Mitigation: None required.

- c. Public Schools?

Unavoidable Significant Impact	Less Than Significant With Mitigation	Less Than Significant Impact	No Impact
<input type="checkbox"/>	<input type="checkbox"/>	<input type="checkbox"/>	<input checked="" type="checkbox"/>

Response: No school impacts at any grade level are anticipated.

Mitigation: None required.

d. Any other public facilities?

Unavoidable Significant Impact	Less Than Significant With Mitigation	Less Than Significant Impact	No Impact
<input type="checkbox"/>	<input type="checkbox"/>	<input type="checkbox"/>	<input checked="" type="checkbox"/>

Response: According to the Public Works Department, no special circumstances regarding impacts to public facilities are associated with this proposal.

Mitigation: None required.

e. Recreation

Unavoidable Significant Impact	Less Than Significant With Mitigation	Less Than Significant Impact	No Impact
<input type="checkbox"/>	<input type="checkbox"/>	<input type="checkbox"/>	<input checked="" type="checkbox"/>

Response: The pedestrian bridge will have a positive impact or recreation in that it is a high priority open space amenity for improving public access to the open space system.

Mitigation: None required.

TRANSPORTATION/TRAFFIC. Would the project:

a. Cause a significant effect on traffic congestion where it increases the volume / capacity (V/C) ratio at an intersection by 0.02 or more in the peak hour and the resultant level of service at that intersection is C or worse?

Unavoidable Significant Impact	Less Than Significant With Mitigation	Less Than Significant Impact	No Impact
<input type="checkbox"/>	<input type="checkbox"/>	<input type="checkbox"/>	<input checked="" type="checkbox"/>

Response: The construction of the pedestrian bridge is not expected to generate any additional traffic and is not expected to have any significant impacts on local intersections.

Mitigation: None required.

b. Result in inadequate emergency access?

Unavoidable Significant Impact	Less Than Significant With Mitigation	Less Than Significant Impact	No Impact
<input type="checkbox"/>	<input type="checkbox"/>	<input type="checkbox"/>	<input checked="" type="checkbox"/>

Response: The proposal will not result in inadequate emergency access.

Mitigation: None required.

UTILITIES AND SERVICE SYSTEMS. Would the project:

- a. Exceed local wastewater treatment capacity or be inconsistent with any requirements of the State Regional Water Quality Control Board (SRWQCB)?

Unavoidable Significant Impact	Less Than Significant With Mitigation	Less Than Significant Impact	No Impact
<input type="checkbox"/>	<input type="checkbox"/>	<input type="checkbox"/>	<input checked="" type="checkbox"/>

Response: The proposal will not have any effect on wastewater treatment capacity.

Mitigation: None required.

- b. Have sufficient water supplies available, or are new or expanded entitlements needed?

Unavoidable Significant Impact	Less Than Significant With Mitigation	Less Than Significant Impact	No Impact
<input type="checkbox"/>	<input type="checkbox"/>	<input type="checkbox"/>	<input checked="" type="checkbox"/>

Response: The project will not require water service.

Mitigation: None required.

- c. Be served by a landfill with sufficient permitted capacity to accommodate the project's solid waste disposal needs?

Unavoidable Significant Impact	Less Than Significant With Mitigation	Less Than Significant Impact	No Impact
<input type="checkbox"/>	<input type="checkbox"/>	<input type="checkbox"/>	<input checked="" type="checkbox"/>

Response: The project will not generate waste.

Mitigation: None required.

MANDATORY FINDING OF SIGNIFICANCE.

- a. Does the project have the potential to degrade the quality of the environment, substantially reduce the habitat of a fish or wildlife species, cause a fish or wildlife population to drop below self-sustaining levels, threaten to eliminate a plant or animal community, reduce the number or restrict the range of a rare or endangered plant or animal or eliminate important examples of the major periods of California history or prehistory?

Unavoidable Significant Impact	Less Than Significant With Mitigation	Less Than Significant Impact	No Impact
<input type="checkbox"/>	<input type="checkbox"/>	<input type="checkbox"/>	<input checked="" type="checkbox"/>

- b. Does the project have the potential to achieve short-term, to the disadvantage of long-term, environmental goals?

Unavoidable Significant Impact	Less Than Significant With Mitigation	Less Than Significant Impact	No Impact
<input type="checkbox"/>	<input type="checkbox"/>	<input type="checkbox"/>	<input checked="" type="checkbox"/>

- c. Does the project have impacts that are individually limited, but cumulatively considerable? ("Cumulatively considerable" means that the incremental effects of a project are considerable when viewed in connection with the effects of past projects, the effects of other current projects, and the effects of probable future projects.)

Unavoidable Significant Impact	Less Than Significant With Mitigation	Less Than Significant Impact	No Impact
<input type="checkbox"/>	<input type="checkbox"/>	<input type="checkbox"/>	<input checked="" type="checkbox"/>

- d. Does the project have environmental effects which will cause substantial adverse effects on human beings, either directly or indirectly?

Unavoidable Significant Impact	Less Than Significant With Mitigation	Less Than Significant Impact	No Impact
<input type="checkbox"/>	<input type="checkbox"/>	<input type="checkbox"/>	<input checked="" type="checkbox"/>

ADDITIONAL SOURCE REFERENCES

1	Project Description, Appendix A
2	Site visit
3	City of Thousand Oaks General Plan
4	City of Thousand Oaks Municipal Code
5	City of Thousand Oaks Zoning Maps
6	City of Thousand Oaks General Plan, Safety Element
7	City of Thousand Oaks Archaeological Resource Map
8	Ventura County Guidelines for the Preparation of Air Quality Impact Analysis
9	Site Plan, Grading Plans, Appendix A
10	City Data Base on Rare, Endangered or Sensitive Species/ Floristic Survey, Appendix C
11	City of Thousand Oaks Police Department
12	Ventura County Fire Department
13	City of Thousand Oaks Public Works Department
14	Conejo Recreation and Park District
15	Conejo Open Space Conservation Agency

APPENDIX A

Proposed Conejo Creek Pedestrian Bridge

Project Location:

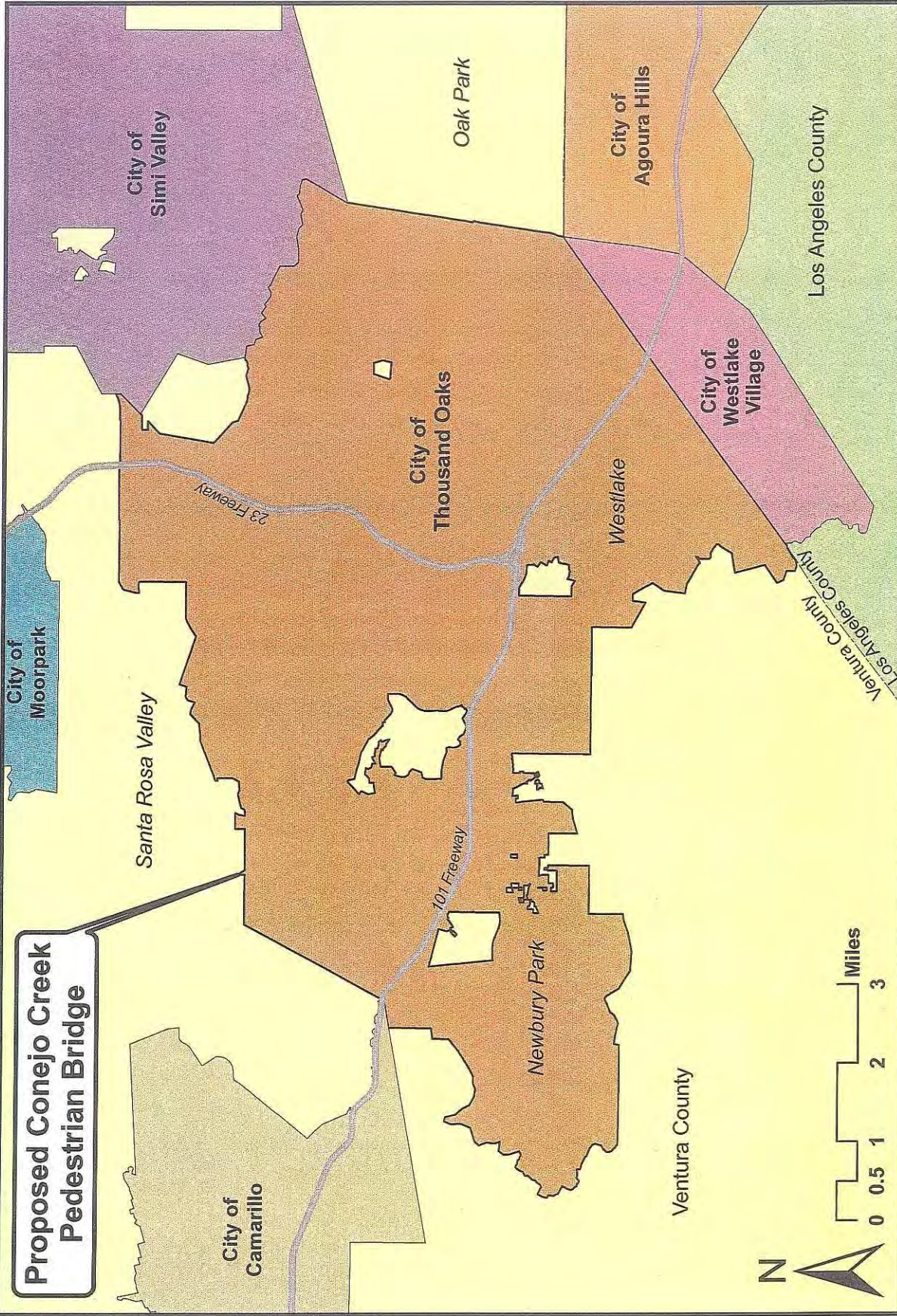
Northwest quadrant of the City of Thousand Oaks, on the north side of the City, just west of Hill Canyon Road (see attached vicinity and location maps).

Project Description:

The purpose of the pedestrian bridge is to provide trail access across the creek for pedestrians, bicyclists and equestrians and to keep trail users off the paved Hill Canyon Road, south of the yellow entry gate. The bridge was identified in the Conejo Canyons Management Plan as a high priority open space amenity for improving public access and is a key component of the trail system in the northern portion of the Conejo Canyons Open Space area.

The proposed bridge is approximately 10.75 feet in width and one-hundred forty-five feet in length and will not be used by motor vehicles. The structure is a prefabricated steel truss bridge with a wooden beam walking surface and will be secured to concrete abutments. The abutments will be poured on-site at or above 240 feet elevation. This elevation was chosen for installation of the abutments because it is outside the Army Corps of Engineers jurisdiction for Waters of the United States and is outside the 100' floodplain level, therefore a Fish and Game Department Streambed Alteration Permit will not be required. The location allows for gradual approaches to the bridge on either side so it will be ADA accessible.

Regional Location Map



**Proposed Conejo Creek
Pedestrian Bridge**



PROPOSED CONEJO CREEK PEDESTRIAN BRIDGE

VICINITY MAP



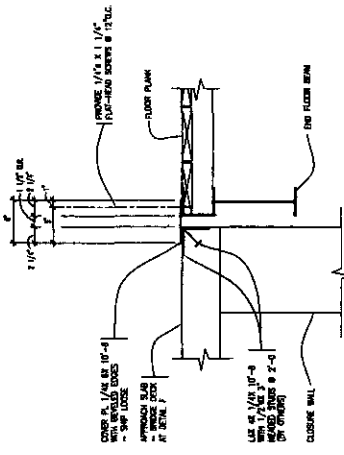
LOCATION MAP



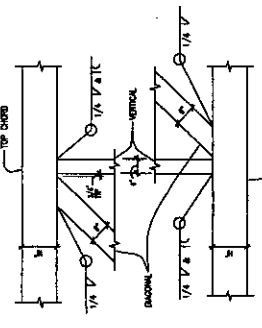
APPENDIX B



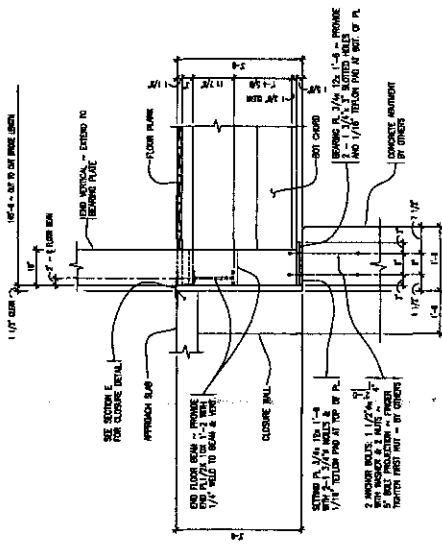
MARK	DATE	PURPOSE
REVISIONS		
DESIGN	12/13/09	DESIGN & DRAWING
DATE	12/13/09	DATE
L. K. JOHNSON	09-028	



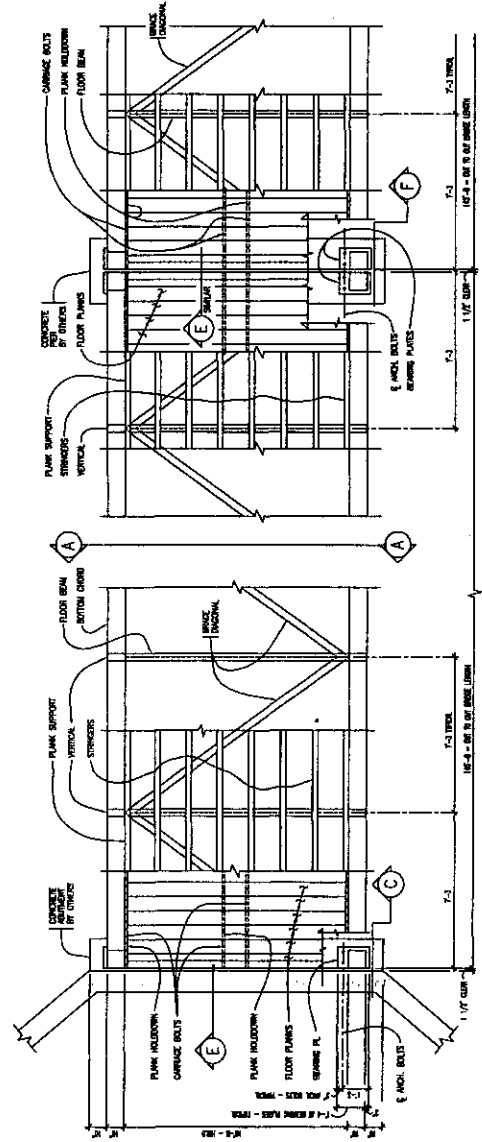
C BEARING DETAIL 1/4" = 1'-0"



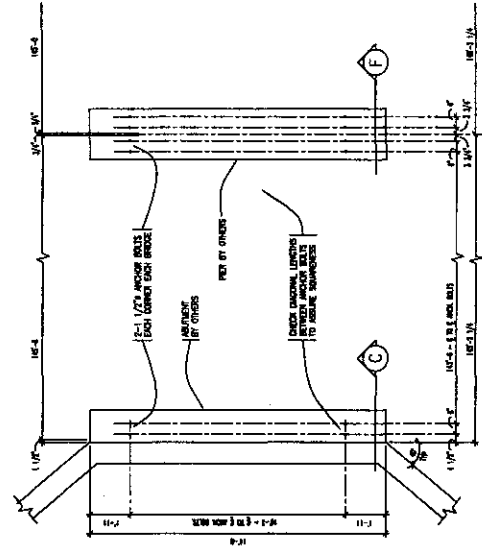
D TRUSS WELDS 3/4" = 1'-0"



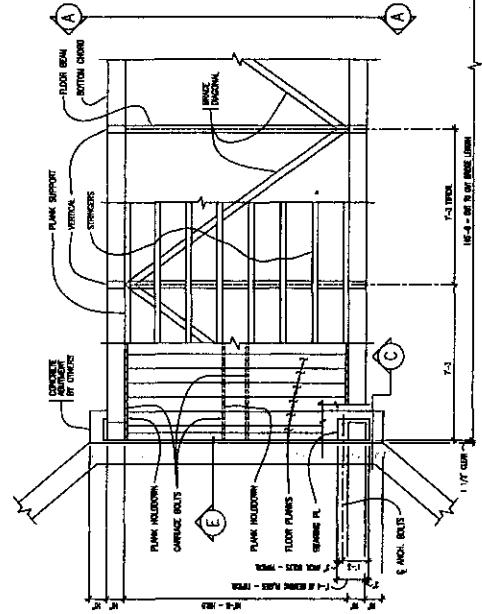
E CLOSURE/GAP DETAIL 1/4" = 1'-0"



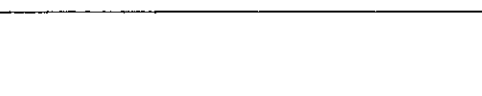
F FOUNDATION PLAN ANCHOR BOLT SETTING 3/8" = 1'-0"



G BRACING LEVEL 3/8" = 1'-0"



H FRAMING LEVEL 3/8" = 1'-0"



I DECKING LEVEL 3/8" = 1'-0"

FOUNDATION PLAN ANCHOR BOLT SETTING 3/8" = 1'-0"

BRACING LEVEL 3/8" = 1'-0"

FRAMING LEVEL 3/8" = 1'-0"

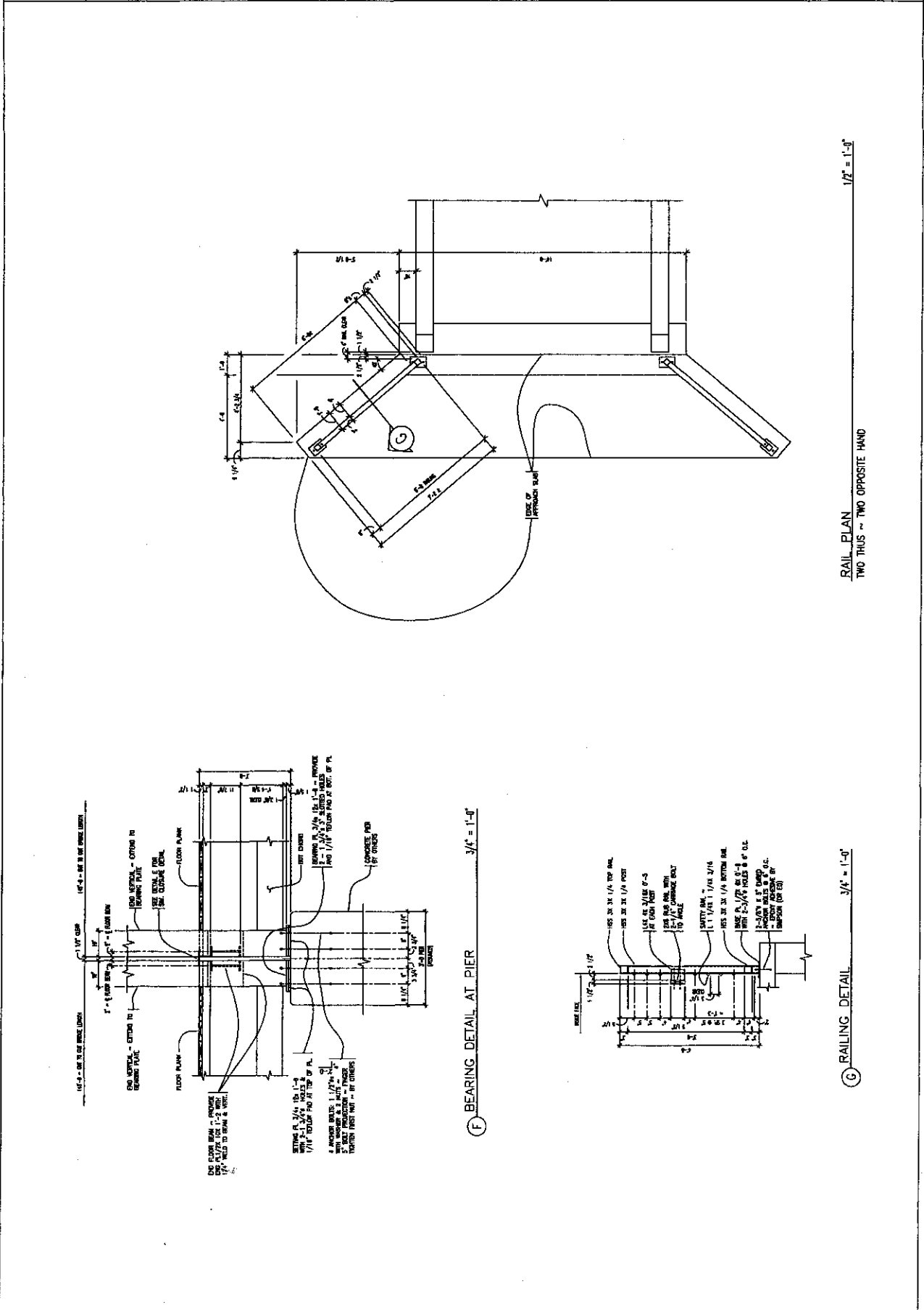
DECKING LEVEL 3/8" = 1'-0"

FOUNDATION PLAN ANCHOR BOLT SETTING 3/8" = 1'-0"

BRACING LEVEL 3/8" = 1'-0"

FRAMING LEVEL 3/8" = 1'-0"

DECKING LEVEL 3/8" = 1'-0"

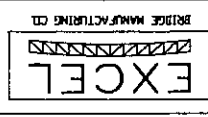


RAIL PLAN
TWO THUS ~ TWO OPPOSITE HAND
1/2" = 1'-0"

RAILING DETAIL
3/4" = 1'-0"

BEARING DETAIL AT PIER
3/4" = 1'-0"

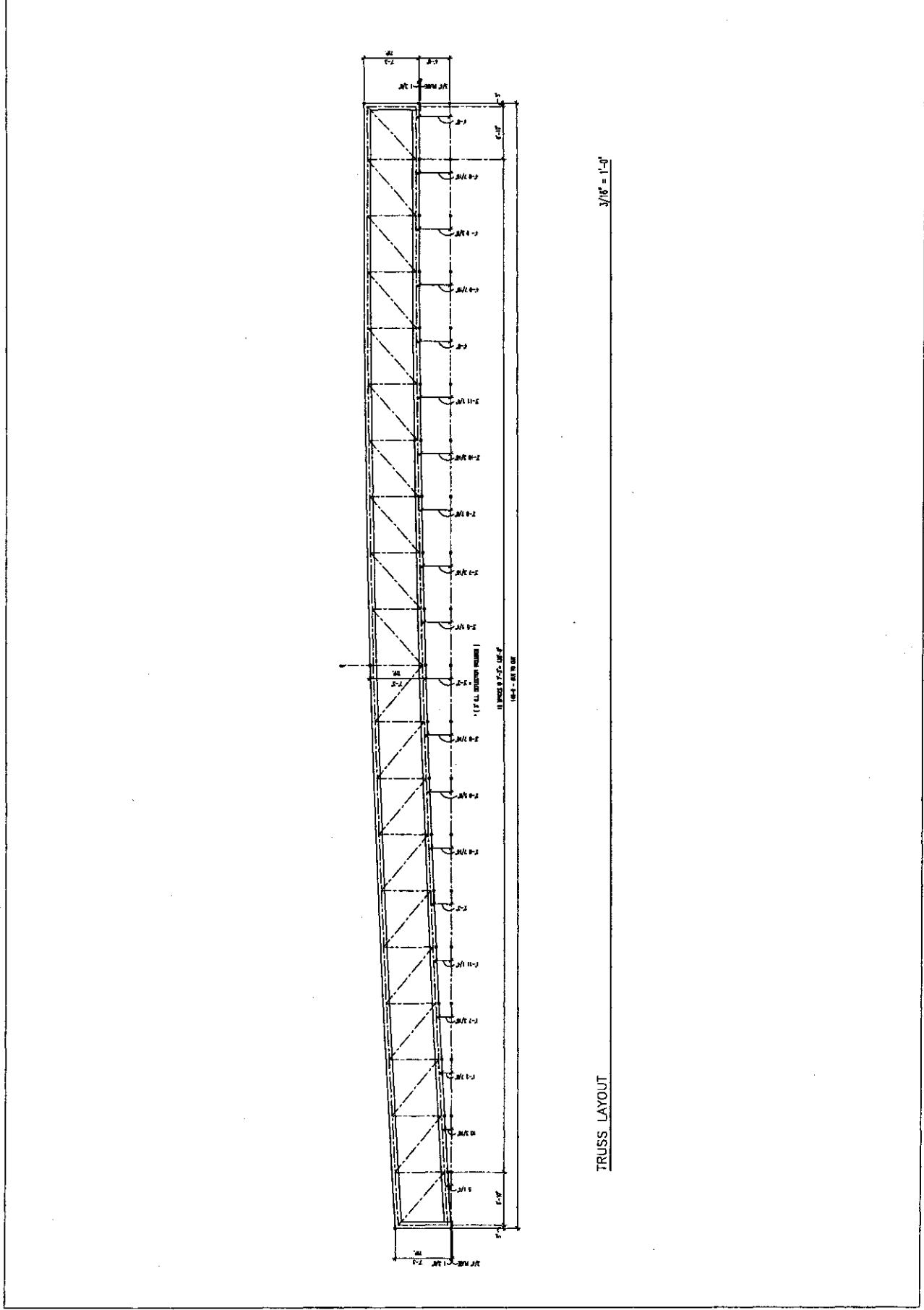
EXCEL JOB NO. 098065
ADAMS COUNTY, CO.
136TH AVE./SOUTH PLATE RIVER
PEDESTRIAN BRIDGES
TWO 10'-8" WIDE X 145'-0" LONG



BRIDGE MANUFACTURING CO.
SANTA FE SPRINGS, CA 90670
FAX (562) 944-4025
OUTSIDE CA (800) 548-0054

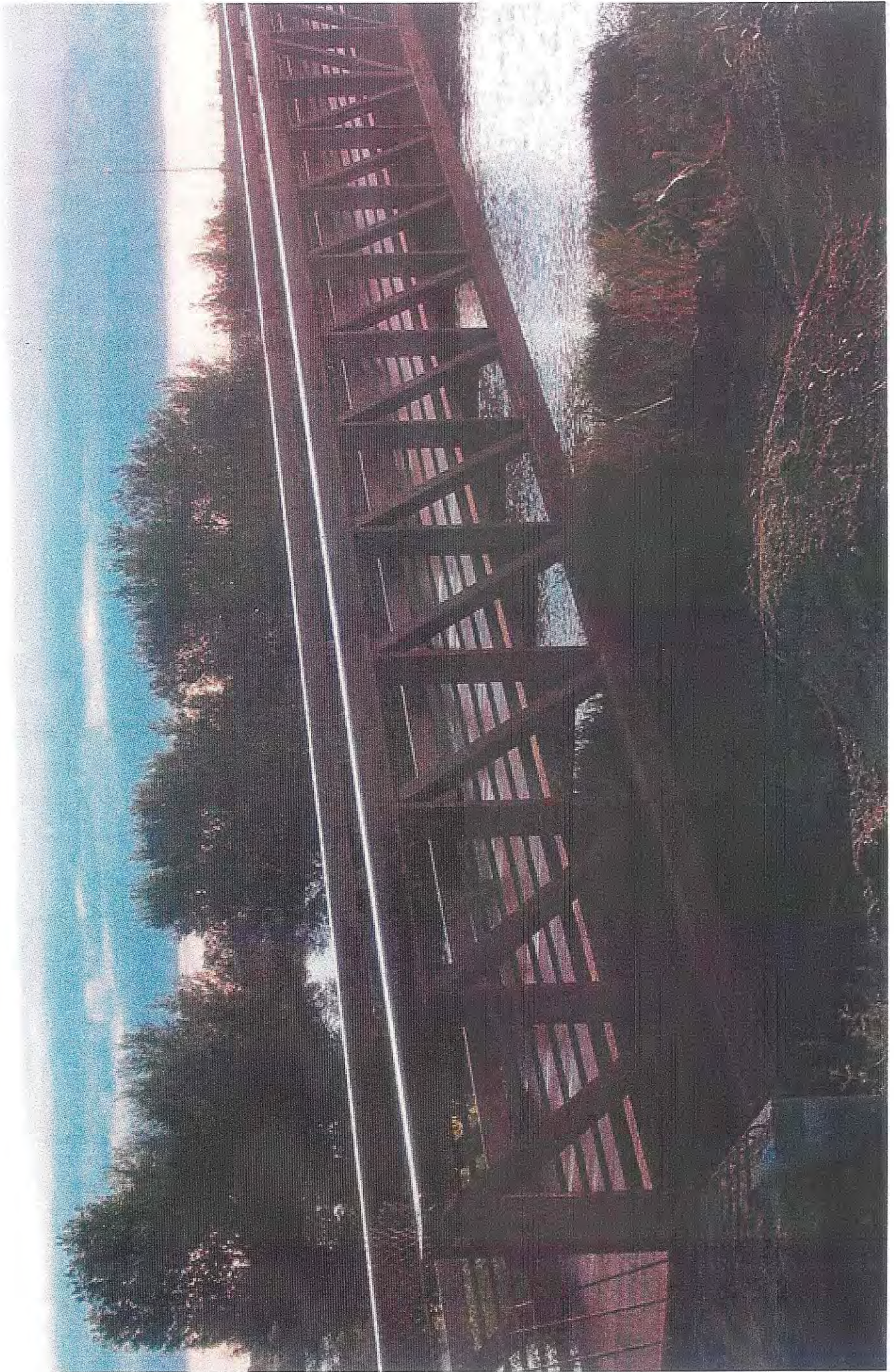
REVISIONS		
MARK	DATE	PURPOSE

DESIGN & DRAWN: LK/SJS
DATE: 4/15/09
L. L. K. JOB NO. 09-038



3/8" = 1'-0"

TRUSS LAYOUT



APPENDIX C

Conejo Creek Pedestrian Bridge

VASCULAR PLANTS

July, 2010

CLASS DICOTYLEDONES – DICOTS

Amaranthaceae – Amaranth Family

Amaranthus albus/ tumbling pigweed

Anacardiaceae – Sumac Family

Rhus integrifolia/ lemonadeberry

Rhus ovata/ sugar bush

Schinus molle / Peruvian pepper tree

Toxicodendron diversilobum/ western poison oak

Apiaceae – Carrot Family

Apium graveolens/ celery*

Conium maculatum/ poison hemlock*

Daucus pusillus/ rattlesnake weed

Foeniculum vulgare/ fennel

Asclepiadaceae – Milkweed Family

Asclepias fascicularis/ narrow-leaf milkweed

Asteraceae – Sunflower Family

Ambrosia psilostachya/ western ragweed

Artemisia californica/ California sagebrush

Artemisia douglasiana/ mugwort*

Baccharis salicifolia [*B. glutinosa*]/ mule fat*

Brickellia californica/ California brickellbush*

Centaurea melitensis/ tocalote

Centaurea solstitialis/ yellow star thistle

Chamomilla suaveolens [*Matricaria matricarioides*]/ pineapple weed

Conyza bonariensis/ flax-leaved fleabane

Conyza canadensis / horse weed

Encelia californica/ California sunflower

Erigeron foliosus var. *foliosus*/ fleabane daisy

Euthamia occidentalis/ grass-leaved goldenrod*

Gnaphalium luteo-album/ weedy cudweed*

Hazardia squarrosa [*Haplopappus* s.] var. *grindelioides*/ saw-toothed goldenbush
Helianthus gracilentus/ slender sunflower
Hemizonia fasciculata/ slender tarweed
Lactuca serriola/ prickly lettuce
Lasthenia gracilis [*L. californica*]/ California goldfields
Malacothrix saxatilis var. *commutata*/ cliff aster
Micropus californicus var. *californicus*/ slender cottonweed
Picris echioides/ bristly ox-tongue*
Senecio vulgaris/ common groundsel
Sonchus oleraceus/ common sow thistle
Xanthium strumarium/ cocklebur *

Boraginaceae – Borage Family

Amsinckia menziesii var. *intermedia* [A. i.]/ common fiddleneck
Cryptantha muricata/ prickly popcornflower

Brassicaceae – Mustard Family

Brassica nigra/ black mustard
Hirschfeldia incana [*Brassica geniculata*]/ Mediterranean mustard
Lobularia maritima/ sweet alyssum
Lepidium nitidum var. *nitidum*/ shiny peppergrass
Rorippa nasturtium-aquaticum/ water cress*

Caprifoliaceae – Honeysuckle Family

Sambucus mexicana/ blue elderberry

Chenopodiaceae – Goosefoot Family

Atriplex semibaccata/ Australian saltbush
Chenopodium album/ Lamb's quarters
Salsola tragus [*Salsola iberica*]/ Russian thistle

Convolvulaceae – Morning-glory Family

Calystegia macrostegia ssp. *intermedia*/ chaparral morning-glory

Crassulaceae – Stonecrop Family

Crassula connata [*Tillaea erecta*]/ pygmy-weed
Dudleya lanceolata/ lance-leaf dudleya

Dudleya pulverulenta/ chalk dudleya

Cucurbitaceae – Gourd Family

Cucurbita foetidissima/ calabazilla

Euphorbiaceae – Spurge Family

Chamaesyce maculata/ spotted spurge

Ricinus communis/ castor bean

Fabaceae – Pea Family

Lotus scoparius/ deer weed

Lotus strigosus/ strigose lotus

Lupinus succulentus/ arroyo lupine

Medicago polymorpha/ California burclover

Melilotus alba/ white sweetclover*

Melilotus indica/ yellow sweetclover*

Fagaceae – Oak Family

Quercus agrifolia/ coast live oak

Geraniaceae – Geranium Family

Erodium cicutarium/ red-stemmed filaree

Hydrophyllaceae – Waterleaf Family

Eucrypta chrysanthemifolia var. *chrysanthemifolia*/ eucrypta

Phacelia ramosissima var. *suffrutescens*/ branching phacelia

Juglandaceae – Walnut Family

Juglans californica var. *californica*/ southern California black walnut

Lamiaceae – Mint Family

Marrubium vulgare/ horehound

Salvia leucophylla/ purple sage

Malvaceae – Mallow Family

Malva parviflora cheeseweed

Papaveraceae – Poppy Family

Eschscholzia californica California poppy

Plantaginaceae – Plantain Family

Plantago major common plantain

Platanaceae – Sycamore Family

Platanus racemosa California sycamore*

Polygonaceae – Buckwheat Family

Eriogonum cinereum ash-leaved buckwheat

Eriogonum crocatum Conejo buckwheat

Eriogonum fasciculatum var *foliosum* California buckwheat

Polygonum arenastrum common knotweed

Polygonum lapathifolium willow smartweed*

Rumex crispus curly dock*

Rumex salicifolius willow dock*

Primulaceae – Primrose Family

Anagallis arvensis scarlet pimpernell

Ranunculaceae – Buttercup Family

Clematis lasiantha pipestem virgin's bower

Rosaceae – Rose Family

Adenostoma fasciculatum chamise

Heteromeles arbutifolia toyon

Potentilla glandulosa cinquefoil*

Rosa californica California rose*

Rubus ursinus California blackberry*

Rubiaceae – Madder Family

Galium angustifolium ssp. *angustifolium* narrow-leaved bedstraw

Galium aparine goose grass

Salicaceae – Willow Family

Salix laevigata/ red willow*
Salix lasiolepis/ arroyo willow*

Scrophulariaceae – Figwort Family

Keckiella cordifolia/ heart-leaved penstemon
Mimulus aurantiacus [*Diplacus longiflorus*]/ sticky monkeyflower
Mimulus guttatus/ common monkeyflower*
Scophularia californica ssp. *floribunda*/ California figwort*
Veronica anagallis-aquatica/ water speedwell*

Solanaceae – Nightshade Family

Datura wrightii/ Jimson weed
Nicotiana glauca/ tree tobacco
Solanum americanum / nightshade
Solanum xanthil chaparral nightshade

Urticaceae – Nettle Family

Hesperocnide tenella/ western nettle
Urtica dioica ssp. *holosericea* [*U. holosericea*]/ stinging nettle*

Verbenaceae – Vervain Family

Verbena lasiostachys/ western verbena

CLASS MONOCOTYLEDONES – MONOCOTS

Agavaceae – Agave Family

Yucca whipplei/ Chaparral yucca

Cyperaceae – Sedge Family

Cyperus involucreatus/ umbrella plant*
Cyperus odoratus/ umbrella sedge*

Juncaceae – Rush Family

Juncus mexicanus/ Mexican rush*

Liliaceae – Lily Family

Cholorgalum pomeridianum/ soap plant

Dichelostemma capitatum ssp *capitatum* [*D. pulchella*]/ blue dicks

Poaceae – Grass Family

Agrostis viridis/ spike bent grass*

Arundo donax/ giant reed*

Avena barbata/ slender wild oat

Avena fatua/ wild oat

Bromus carinatus var. *carinatus*/ California brome

Bromus diandrus/ rippgut brome

Bromus hordaceus [*B. mollis*]/ soft chess

Bromus madritensis ssp. *rubens*/ red brome

Cynodon dactylon/ Bermuda grass

Echinochloa colona/ little barnyard grass*

Hordeum marinum ssp. *leporinum* [*H. leporinum*]/ Mediterranean barley

Lamarkia aurea/ goldentop

Leymus condensatus/ giant wild rye

Melica imperfecta/ coast range melic

Nasella lepida [*Stipa l.*]/ foothill needlegrass

Nasella pulchra [*Stipa p.*]/ purple needlegrass

Piptatherum miliaceum/ smilo grass

Poa secunda ssp. *secunda*/ one-sided bluegrass

Polypogon monspeliensis/ annual beard grass*

Schismus arabicus/ Arabian grass

Schismus barbatus/ Old Han schismus

Vulpia microstachys/ Pacific fescue

Vulpia myuros var. *hirsuta* [*Festuca megalura*]/ hirsute rattail fescue

Typhaceae – Cattail Family

Typha domingensis/ slender-leaved cattail*

Typha latifolia/ broad-leaved cattail*

*= Riparian Associate

APPENDIX D

DRAFT

MITIGATION MONITORING REPORT

NOTE: As required by Public Resources Code, Section 21081.6, any project for which a Mitigated Negative Declaration or Environmental Impact Report is prepared, must be monitored to ensure that all mitigation measures imposed by the City or other "Responsible Party" which may have permit authority over the project, are carried out. In keeping with the provisions of the Public Resources Code, Section 21081.6, the following information has been compiled as a public record demonstrating compliance with these required mitigation monitoring and reporting procedures.

KEYS TO ABBREVIATIONS:

CAO – CITY ATTORNEY'S OFFICE
 DPW – DEPARTMENT OF PUBLIC WORKS
 FD – FINANCE DEPARTMENT
 PA – PROJECT APPLICANT

DDD – COMMUNITY DEVELOPMENT DEPARTMENT
 COSCA – CONEJO OPEN SPACE CONSERVATION AGENCY
 VCAPCD – VENTURA COUNTY AIR POLLUTION CONTROL DISTRICT
 VCFD – VENTURA COUNTY FIRE DISTRICT

PROJECT TITLE: Conejo Creek Pedestrian Bridge	Proponent: Conejo Open Space Conservation Agency (COSCA)
CASE NUMBER(S):	ADDRESS: 2100 Thousand Oaks Blvd. Thousand Oaks, Ca. 91362
PLANNER: Shelly Austin	Contact: Shelly Austin, Associate Planner
DATE: August 31, 2010	PHONE: (805) 449-2339

Note: In the following document, Conditions of Approval are identified by a prefix (CA).

Mitigation Measures/Conditions	Condition No.	Action Required	Frequency	Responsibility*	Date Complete	Initials
AIR QUALITY Minimize engine idling: Construction contractors shall minimize equipment idling time throughout construction. Engines shall be turned off if idling would be for more than five minutes.		Written verification to be provided by constr. supervisor.	Initially and weekly thereafter.	DPW		

Mitigation Measures/Conditions	Condition No.	Action Required	Frequency	Responsibility*	Date Complete	Initials
Ozone precursor emissions from construction equipment and vehicles will be controlled by maintaining equipment engines in good condition and in proper tune per manufacturer's specifications.		Written verification to be provided by constr. Supervisor.	Initially and weekly thereafter.	DPW		
Construction contractors shall use alternatively fueled construction equipment (such as compressed natural gas, liquefied natural gas or electric) when feasible.		Written verification to be provided by constr. supervisor.	Initially and weekly thereafter.	DPW		
Construction contractors shall stop all clearing, grading, earth moving, and excavation operations during periods of high winds (20 miles per hour or greater, as measured continuously over a one-hour period.		Written verification to be provided by constr. supervisor.	Initially and weekly thereafter.	DPW		
Construction contractors shall sweep all on-site driveways and adjacent streets and roads at least once per day, preferably at the end of the day, if visible soil material is carried over to adjacent streets and roads.		Written verification to be provided by constr. supervisor.	Initially and weekly thereafter.	DPW		
Construction contractors shall advise crews to wear respirators during project clearing, grading, and excavation operations in accordance with California Division of Occupational Safety and Health regulations.		Written verification to be provided by constr. supervisor.	Initially and weekly thereafter.	DPW		
All trucks shall be required to cover their loads as required by the California Vehicle Code, Section 2311.4.		Written verification to be provided by constr. Supervisor	Initially and weekly thereafter.	DPW		

Mitigation Measures/Conditions	Condition No.	Action Required	Frequency	Responsibility*	Date Complete	Initials
Keep all grading and construction equipment on or near the site until those phases of development are completed.		Written verification to be provided by Const. Supervisor.	Field inspection as necessary.	DPW, CDD		
Employ water, as needed, for dust control during grading.		Written verification to be provided by Const. Supervisor.	Initially and weekly thereafter.	DPW		
BIOLOGICAL RESOURCES						
In coordination with the Biological Monitor and CDFG, the population of Conejo buckwheat (<i>Eriogonum crocatum</i>) shall be fenced at the road during construction to avoid any disturbance to the plants.		Final plan check, field inspection.	Once for plan check, field inspection.	CDD and CDFG.		
During periods where heavy equipment must cross the Arroyo Conejo drainage, a qualified biological monitor shall be on hand to ensure that no harm comes to aquatic species in the stream.		Field inspection.	Field inspection as necessary.	CDD and CDFG		
CA - When operations require moving of equipment across a flowing stream an upstream and downstream seine shall be placed each work day and the crossing area surveyed for aquatic species. At the end of the daily work period the seines should be removed to avoid inadvertently trapping aquatic species.		Field Inspection.	As necessary.	CDD and CDFG		
CA - During construction the 28 BMPs provided by CDFG and contained in the Public Comments section of the MND, shall be complied with, as applicable, and a copy maintained on site.		Field Inspection.	As necessary.	CDD		

Mitigation Measures/Conditions	Condition No.	Action Required	Frequency	Responsibility*	Date Complete	Initials
<p>CULTURAL RESOURCES</p> <p>In the event that previously undiscovered cultural resources are encountered during construction grading, all work within the immediate vicinity shall be suspended until adequate measures can be implemented to mitigate adverse impacts</p>		Field inspection.	As needed during project construction.	PWD		
<p>GRADING AND TOPOGRAPHIC MODIFICATION</p>						
<p>Mandatory haul routes to and from the project site will be selected by the Public Works Department in order to minimize any disruption of traffic patterns and disturbance to neighborhoods.</p>		Final plan check; field inspection.	Once for plan check; field inspection periodically during construction.	DPW		